

65m - 2.800kg

60m - 3.300kg

55m - 3.700kg

50m - 4.200kg

48m - 4.400kg

43m - 4.700kg

38m - 5.000kg

36m - 5.100kg

31m - 6.000kg

26m - 7.100kg

I

II

III

IV

V

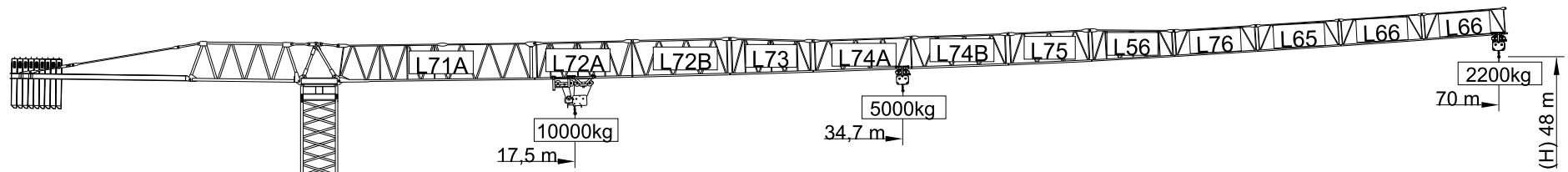
VI

VII

VIII

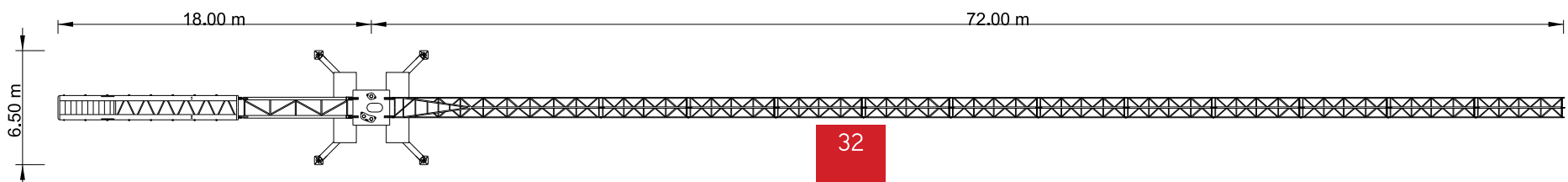
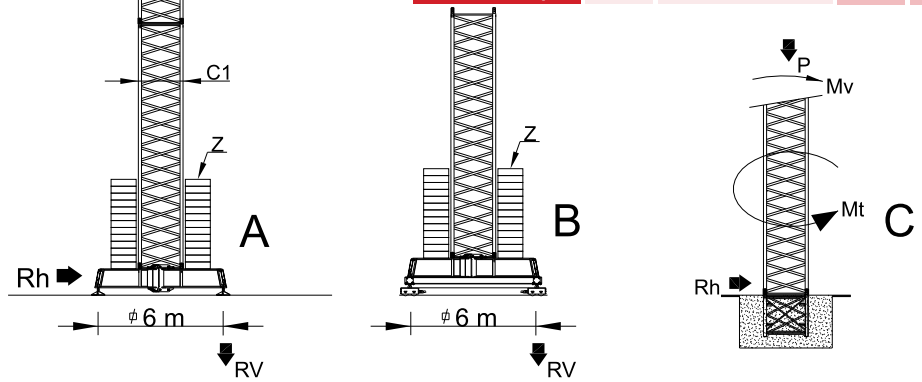
IX

X



Cargas.Loads.Lasten.Charges.Cargas.Carichi.Yükler. ГРУЗОПОДЪЕМНОСТЬ

Icon	Jib Section	L71A+L72A+L72B+L73+L74A L74B+L75+L56+L76+L65 L66+L66	10000 kg/m M/RT	5000 kg	m	18	21	26	31	36	38	43	48	50	55	60	65	70	
						18	21	26	31	36	38	43	48	50	55	60	65	70	
18000 kg 8x2000 + 2x1000 kg	70m	L71A+L72A+L72B+L73+L74A L74B+L75+L56+L76+L65 L66+L66	17,5 m	34,7 m	5000	5000	5000	5000	4800	4500	3900	3500	3300	3000	2700	2400	2200		
18000 kg 8x2000 + 2x1000 kg	65m	L71A+L72A+L72B+L73+L74A L74B+L75+L56+L76+L65+L66	19,9 m	39,4 m	5000	5000	5000	5000	4500	4000	3800	3400	3100	2900	2600	2300	2000	1800	
18000 kg 8x2000 + 2x1000 kg	60m	L71A+L72A+L72B+L73+L74A L74B+L75+L56+L76+L65	21,2 m	42 m	5000	5000	5000	5000	5000	4900	4300	4100	3700	3300	2900				
17000 kg 8x2000 + 1x1000 kg	55m	L71A+L72A+L72B+L73+L74A L74B+L75+L56+L76	21 m	41,5 m	5000	5000	5000	5000	5000	4800	4300	4100	3700						
16000 kg 8x2000 kg	50m	L71A+L72A+L72B+L73+L74A L74B+L75+L56	21,4 m	42,4 m	5000	5000	5000	5000	5000	4900	4400	4200	3800						
15000 kg 7x2000+1x1000 kg	48m	L71A+L72A+L72B+L73+L75 L56+L76+L65	21,6 m	42,7 m	5000	5000	5000	5000	5000	5000	4400								
13000 kg 6x2000+1x1000 kg	43m	L71A+L72A+L72B+L73+L75 L56+L76	20,6 m	40,8 m	5000	5000	5000	5000	5000	4700									
11000 kg 5x2000 + 1x1000 kg	38m	L71A+L72A+L72B+L73+L75 L56	20 m	39,7 m	5000	5000	5000	5000	5000	5000									
9000 kg 4x2000+1x1000 kg	36m	L71A+L73+L75+L56+L76+L65	19,8 m	39,3 m	5000	5000	5000	5000	5000										
8000 kg 4x2000 kg	31m	L71A+L73+L75+L56+L76	19,5 m	38,7 m	5000	5000	5000	5000											
7000 kg 3x2000+1x1000 kg	26m	L71A+L73+L75+L56	19 m	37,6 m	5000	5000	5000												



# SGT 7022TL

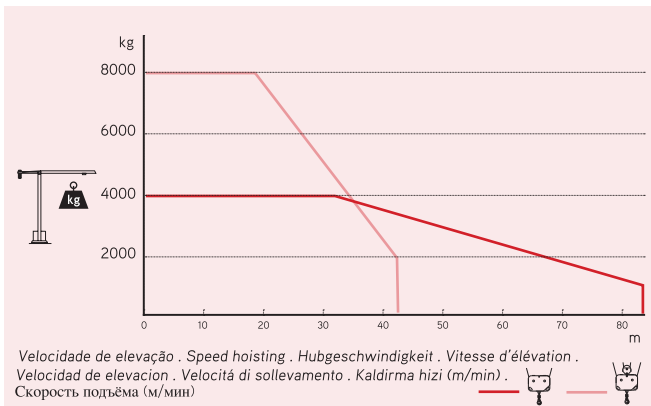
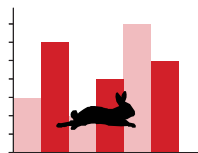
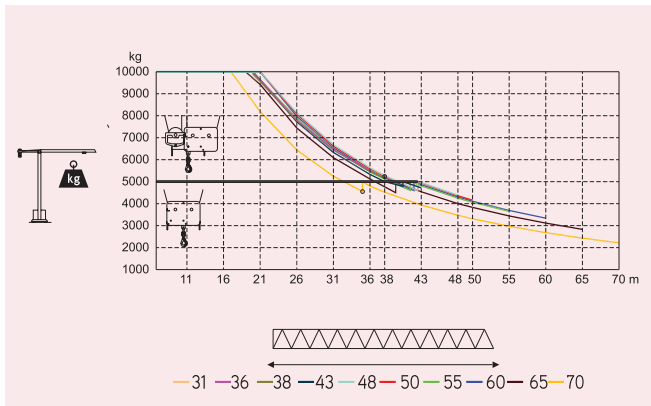
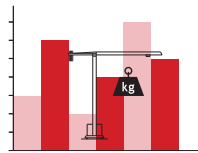
70m - 2.200kg

10.000Kg

Características . Eigenschaften  
Caractéristiques . Caratteristiche . Caratteristiche  
Özellikler . ХАРАКТЕРИСТИКИ

	0 a 85 m/min 0 a 42,5 m/min	37 kW
	0 a 1 r.p.m.	3x5 daN.m
	0 a 60 m/min	5,5 kW
	0-10 m/min	2x4 kW
		55 kVA
		400 V +- 5% (50/60 Hz)

\* Opção . Option . Optional . Option . Opcción . Opzione . Seçenek . Опция



Velocidade de elevação . Speed hoisting . Hubgeschwindigkeit . Vitesse d'élévation .  
Velocidad de elevación . Velocità di sollevamento . Kaldırma hızı (m/min) .  
Скорость подъёма (м/мин)

Elementos . Parts . Teile . Éléments . Elemento . Parçalar . ЭЛЕМЕНТЫ

		A (mm)	B (mm)	C (mm)	kg	Code
L71A		11970	1900	2900	6750	
L72A		6185	1160	2260	1400	
L72B		6195	1160	2260	1140	
L73		5230	1160	2260	780	
L74A		6165	1160	1950	830	
L74B		6165	1160	1950	710	
L75		5200	1160	1950	560	
L56		5200	1160	1930	530	530 70 22
L76		5160	1160	1610	400	
L65		5110	1160	1610	360	
L66		5110	1160	1610	280	
RS11 R111		2620	2180	2150	8000	
P3		2430	1300	760	1270	
CL7		6475	1220	2300	2600	
CL4		11400	1500	500	4000	
CP3		1160	165	3140	2x1000 2000	704 10 00
CP2		1160	330	3140	8x2000 16000	704 20 00
TOTAL					47610	
C1		12000	2180	2180	4200	509 12 00
C1		6130	2180	2180	2200	509 06 00
C1		3195	2180	2180	1200	508 12 03
C1		3195	2250	2250	1360	509 06 03
C1		2280	2150	2150	850	509 06 02
TOTAL					8000	
C1		8725	800	1370	4600	609 00 02
C1		4200	380	1370	2x1700 3400	
TOTAL					8000	