

55m - 2.400kg

50m - 2.800kg

45m - 3.300kg

40m - 3.800kg

38m - 4.000kg

33m - 4.100kg

28m - 4.600kg

I

II

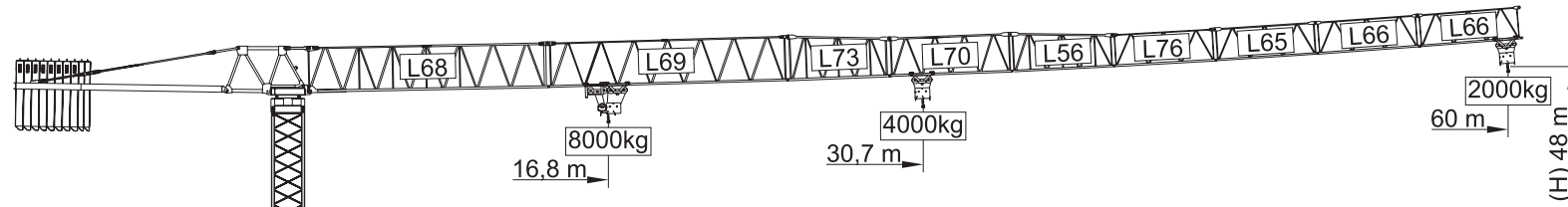
III

IV

V

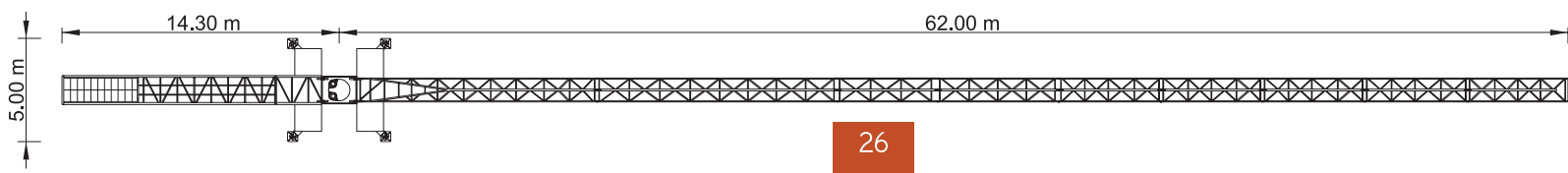
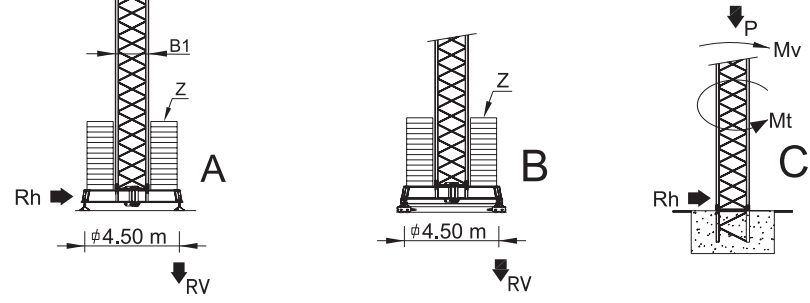
VI

VII



Cargas.Loads.Lasten.Charges.Cargas.Carichi.Yükler. ГРУЗОПОДЪЕМНОСТЬ

Icon	Jib Section	kg/m	M/KГ	4000 Kg	m	Cargas										
						18	23	28	33	38	40	45	50	55	60	
Icon	60m	8000	16,8	4000	33,3	L68+L69+L73+L70+L56	4000	4000	4000	4000	3450	3250	2830	2500	2230	2000
						L76+L65+L66+L66	7430	5620	4450	3640	3050	2850	2430	2100	1830	1600
Icon	55m	8000	17,9	4000	35,4	L68+L69+L73+L70+L56	4000	4000	4000	4000	3700	3480	3040	2690	2400	
						L76+L65+L66	7960	6030	4790	3930	3300	3080	2640	2290	2000	
Icon	50m	8000	18,5	4000	36,7	L68+L69+L73+L70+L56	4000	4000	4000	4000	3800	3580	3130	2800		
						L76+L65	8000	6200	4930	4050	3400	3180	2730	2400		
Icon	45m	8000	19,2	4000	37,6	L68+L69+L73+L70	4000	4000	4000	4000	3950	3730	3300			
						L56+L76	8000	6450	5240	4220	3550	3330	2900			
Icon	40m	8000	19,3	4000	37,8	L68+L69+L73+L70+L56	4000	4000	4000	4000	3970	3800				
							8000	6480	5160	4240	3570	3400				
Icon	38m	8000	19,2	4000	38	L68+L73+L70+L56+L76	4000	4000	4000	4000	4000					
						L65	8000	6480	5170	4250	3600					
Icon	33m	8000	18,5	4000	33	L68+L73+L70+L56+L76	4000	4000	4000	4000						
							8000	6220	4950	4100						
Icon	28m	8000	17,3	4000	28	L68+L73+L70+L56	4000	4000	4000							
							7580	5730	4600							








SGT 6020TL

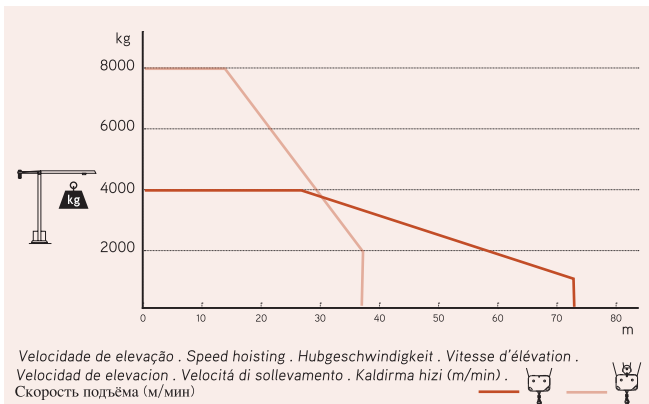
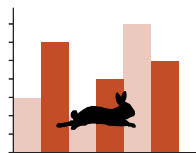
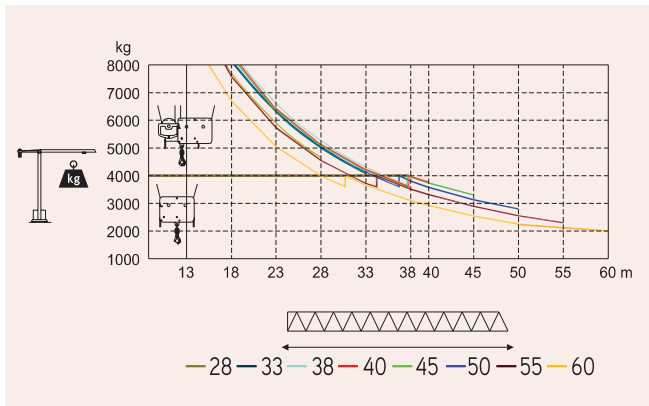
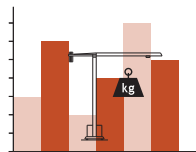
60m - 2.000kg

8.000Kg

Características . Eigenschaften
Caractéristiques . Caratteristiche . Caratteristiche
Özellikler . ХАРАКТЕРИСТИКИ

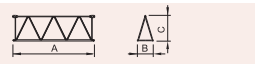
	0 a 72 m/min 0 a 36 m/min	22 kW
	0 a 1 r.p.m.	3x5 daN.m
	0 a 60 m/min	5,5 kW
	0-10 m/min	2x4 kW
		40 kVA
		400 V +- 5% (50/60 Hz)

* Опção . Option . Optional . Option . Opcción . Opzione . Seçenek . Опция



Velocidade de elevação . Speed hoisting . Hubgeschwindigkeit . Vitesse d'élévation .
Velocidad de elevación . Velocità di sollevamento . Kaldırma hızı (m/min) .
Скорость подъёма (м/мин)

Elementos . Parts . Teile . Éléments . Elementos . Elemento . Parçalar . ЭЛЕМЕНТЫ

		A (mm)	B (mm)	C (mm)	kg	Code
L68		11970	1900	2900	5050	531 60 20
L69		11960	1160	2260	1650	
L73		5230	1160	2260	750	
L70		6200	1160	1950	680	
L56		5200	1160	1930	590	
L76		5180	1160	1610	370	
L65		5110	1160	1610	330	
L66		5110	1160	1610	2x300 600	
RS9 RI9		2620	2180	2150	4860	
CL6		3860	1220	2280	1840	
CL4		11400	1500	500	4000	
CP3		1160	165	3140	2x1000 2000	704 10 00
CP2		1160	330	3140	8x2000 16000	704 20 00
TOTAL					38720	
B1		12000	1620	1620	3450	508 12 00
B1		6130	1620	1620	1800	508 06 00
B1		3195	1620	1620	1070	508 06 01
B1		3195	1830	1830	1100	508 06 03
B1		1775	1600	1600	650	508 06 02
B1		6620	500	1040	1850	608 00 01
B1		3210	340	1040	2x950 1900	
TOTAL					3750	