

45m - 1.500kg

40m - 1.800kg

33m - 2.250kg

28m - 2.500kg

23m - 2.500kg

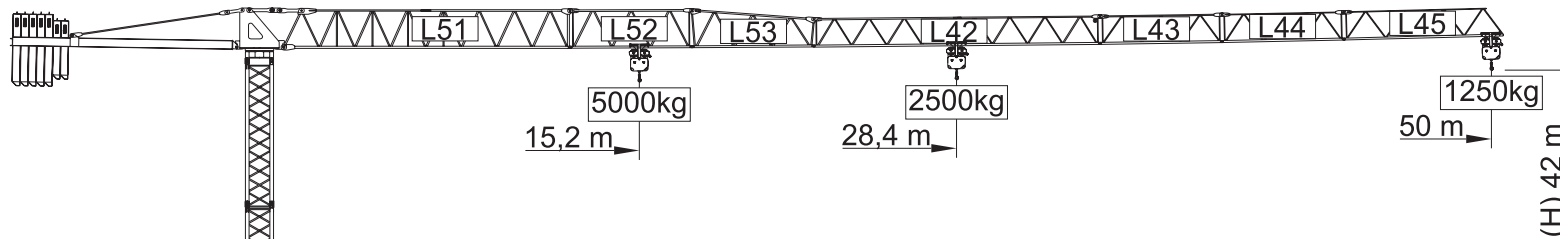
I

II

III

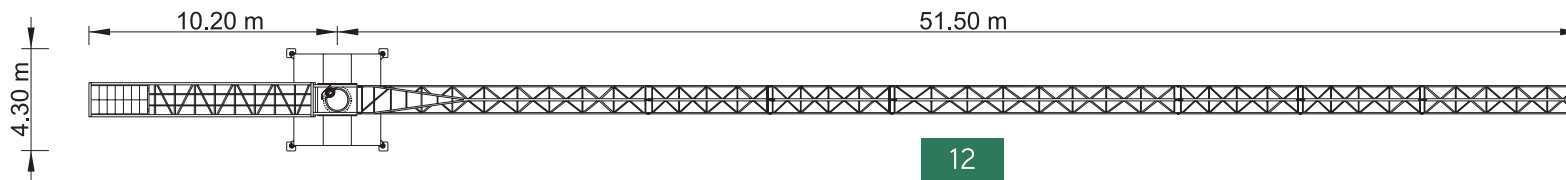
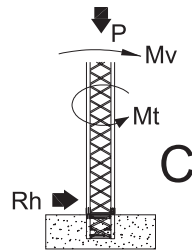
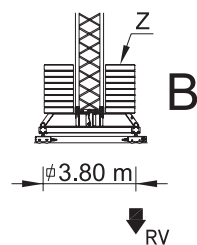
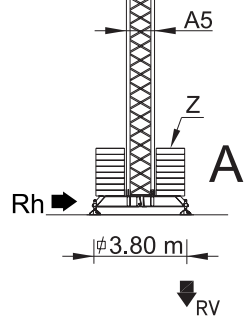
IV

V



Cargas.Loads.Lasten.Charges.Cargas.Carichi.Yükler. ГРУЗОПОДЪЕМНОСТЬ

Icon	Jib Section	Kg/m M/KГ	m	Capacity (kg)							
				12	15	23	28	33	40	45	50
13000 kg 5x2000 + 2x1500 kg	50m L51+L52+L53+L42+L43 L44+L45	5000	28,4 m	2500	2500	2500	2500	2100	1600	1400	1250
			15,2 m	5000	5000	3200	2500	2100	1600	1400	1250
11500 kg 5x2000 + 1x1500 kg	45m L51+L52+L53+L42+L43 L45	2500	29,5 m	2500	2500	2500	2500	2200	1700	1500	
			15,8 m	5000	5000	3300	2600	2200	1700	1500	
11000 kg 4x2000 + 2x1500 kg	40m L51+L52+L53+L42+L45	2500	30,3 m	2500	2500	2500	2500	2200	1800		
			16,2 m	5000	5000	3400	2700	2200	1800		
9000 kg 3x2000+ 2x1500 kg	33m L51+L52+L53+L43+L45	2500	30,1 m	2500	2500	2500	2500	2250			
			16,2 m	5000	5000	3400	2700	2250			
7000 kg 2x2000+ 2x1500 kg	28m L51+L52+L53+L45	2500	28 m	2500	2500	2500	2500				
			15 m	5000	5000	3100	2500				
5000 kg 1x2000+ 2x1500 kg	23m L51+L53+L45	2500	23 m	2500	2500	2500					
			12,3 m	5000	4000	2500					



SGT 5012TL

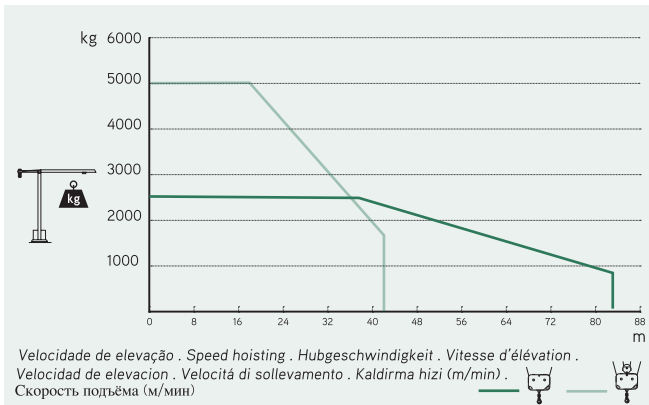
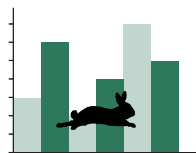
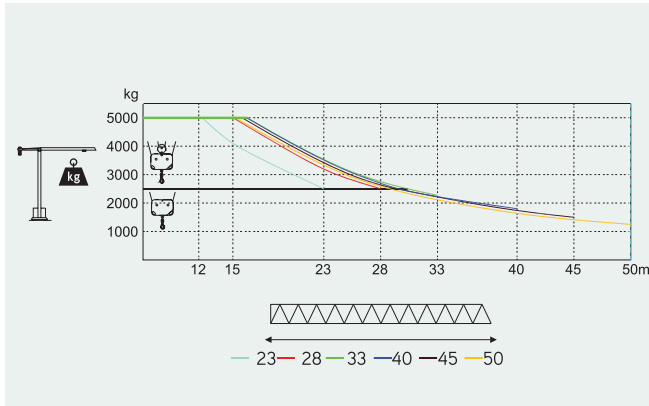
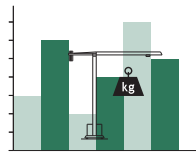
50m - 1.250kg

5.000Kg

Características . Eigenschaften
Caractéristiques . Caratteristiche . Caratteristiche
Özellikler . ХАРАКТЕРИСТИКИ

	0 a 82 m/min 0 a 41 m/min	15 kW
	0 a 1 r.p.m.	2x5 daN.m
	0 a 60 m/min	3 kW
	15 m/min	2x3 kW
	30 kVA	
	400 V +- 5% (50/60 Hz)	

* Опção . Option . Optional . Option . Opcción . Opzione . Seçenek . Опция



Velocidade de elevação . Speed hoisting . Hubgeschwindigkeit . Vitesse d'élévation .
Velocidad de elevación . Velocità di sollevamento . Kaldırma hızı (m/min) .
Скорость подъёма (м/мин)

Elementos . Parts . Teile . Éléments . Elementos . Elemento . Parçalar . ЭЛЕМЕНТЫ

	A (mm)	B (mm)	C (mm)	kg	Code
L51	11950	1300	2250	2900	
L52	5200	1160	1650	535	
L53	5200	1160	1650	510	
L42	11820	1160	1210	820	
L43	5100	1160	1210	260	
L44	5100	1160	1210	230	530 50 12
L45	6800	1160	1210	290	
RS5 RI5	2150	1320	2320	2800	
CL3	9350	1380	560	2000	
CP1	1160	320	2530	2x1500 3000	704 15 00
CP2	1160	330	3140	5x2000 10000	704 20 00
TOTAL				23345	
A5	11985	1160	1160	3080	530 12 00
A5	6075	1160	1160	1660	530 06 00
A5	3120	1160	1160	990	530 06 01
A5	3120	1385	1385	1040	530 06 03
A5	1275	1160	1160	450	530 06 02
A5	5530	500	750	1250	630 00 03
A5	2270	360	750	2x635 1270	
TOTAL				2520	