

43m - 1.300kg

38m - 1.600kg

35m - 1.800kg

31m - 2.100kg

26m - 2.400kg

23m - 2.500kg

I

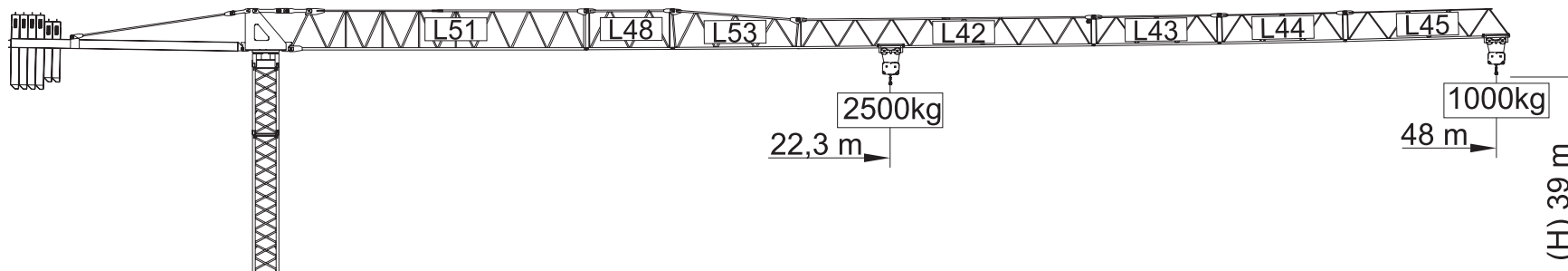
II

III

IV

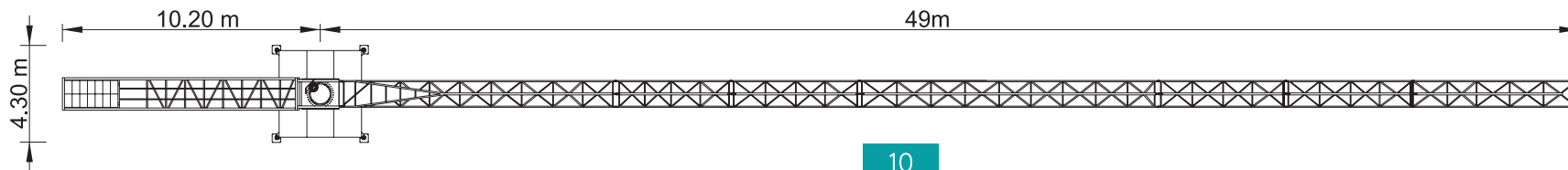
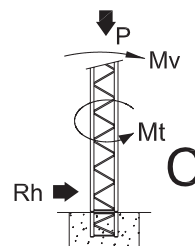
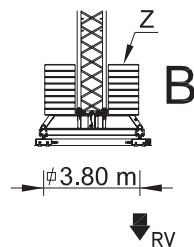
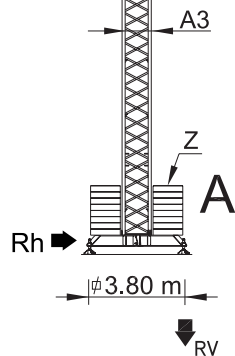
V

VI



Cargas.Loads.Lasten.Charges.Cargas.Carichi.Yükler. ГРУЗОПОДЪЕМНОСТЬ

Icon	Length (m)	Sections	Kg/m M/KT 2500	m	Capacity (kg)							
					23	26	31	35	38	43	48	
	48m	L51+L48+L53+L42 L43+L44+L45	22,3 m		2410	2100	1710	1480	1340	1150	1000	
	43m	L51+L48+L53+L42 L43+L45	24,6 m		2500	2350	1920	1670	1510	1300		
	38m	L51+L48+L53+L42 L45	25,8 m		2500	2480	2030	1760	1600			
	35m	L51+L53+L42+L45	26,3 m		2500	2500	2070	1800				
	31m	L51+L48+L53+L43 L45	26,7 m		2500	2500	2100					
	26m	L51+L48+L53+L45	25,1 m		2500	2400						
	23m	L51+L48+L45	23 m		2500							



SGT 4810TL

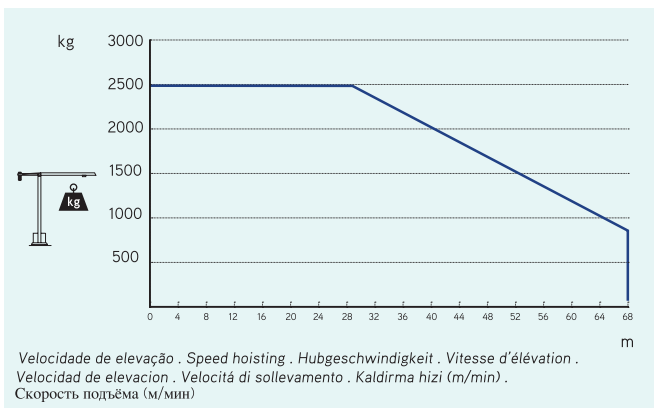
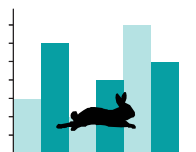
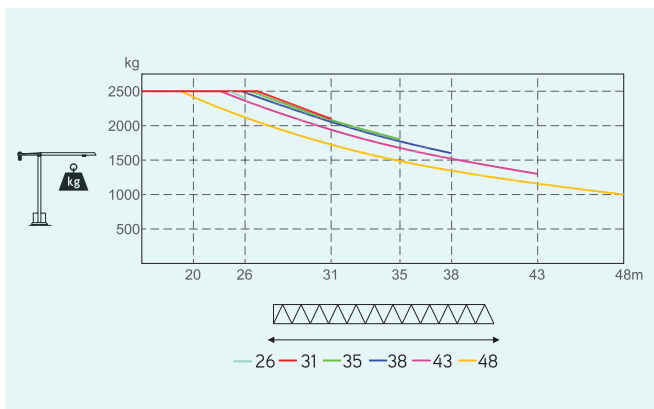
48m - 1.000kg

2.500Kg

Características . Eigenschaften
Caractéristiques . Caratteristiche . Caratteristiche
Özellikler . ХАРАКТЕРИСТИКИ

	0 a 68 m/min	11 kW
	0 a 1 r.p.m.	2x5 daN.m
	0 a 50 m/min	1,5 kW
	15 m/min	2x3 kW
		20 kVA
		400 V +- 5% (50/60 Hz)

* Опção . Option . Optional . Option . Opcción . Opzione . Seçenek . Опция



Velocidade de elevação . Speed hoisting . Hubgeschwindigkeit . Vitesse d'élévation .
Velocidad de elevación . Velocità di sollevamento . Kaldırma hızı (m/min) .
Скорость подъёма (м/мин)

Elementos . Parts . Teile . Éléments . Elementos . Elemento . Parçalar . ЭЛЕМЕНТЫ

	A (mm)	B (mm)	C (mm)	kg	Code
L51	11950	1300	2250	2900	
L48	3190	1160	1650	350	
L53	5200	1160	1650	510	
L42	11820	1160	1210	820	
L43	5100	1160	1210	260	
L44	5100	1160	1210	230	530 48 10
L45	6800	1160	1210	290	
RS5 RI3	2150	1320	2200	2800	
CL3	9350	1380	560	2000	
CP1	1160	320	2530	2x1500 3000	704 15 00
CP2	1160	330	3140	4x2000 8000	704 20 00
TOTAL				21160	
A3	11985	1180	1180	2450	504 12 00
A3	6075	1180	1180	1300	504 06 00
A3	3120	1180	1180	720	504 06 01
A3	3120	1385	1385	810	504 06 03
A3	1200	1160	1160	350	504 06 02
A3	5525	500	635	1075	604 00 01
A3	2670	360	635	2x535 1070	
TOTAL				2145	