

35m - 1.400kg

30m - 1.600kg

23m - 1.800kg

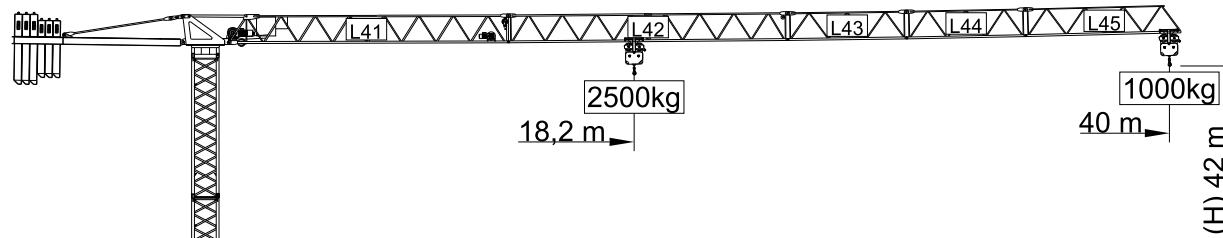
18m - 2.000kg

I

II

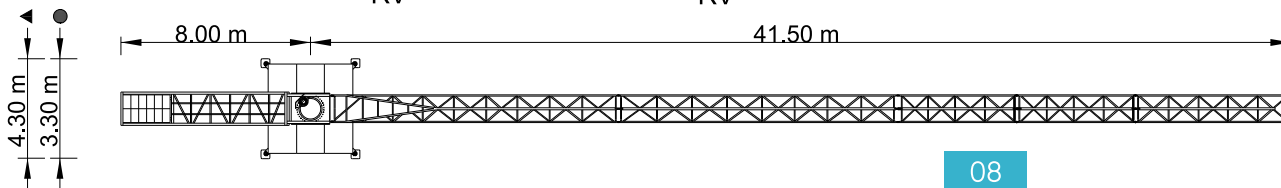
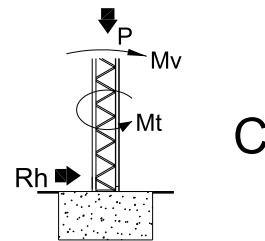
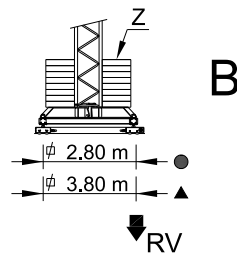
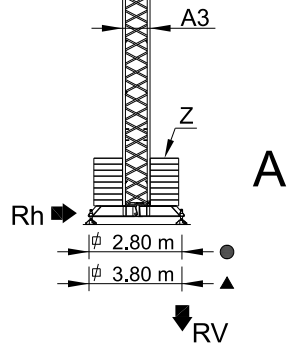
III

IV



Cargas.Loads.Lasten.Charges.Cargas.Carichi.Yükler.ГРУЗОПОДЪЕМНОСТЬ

Icon	Diagram	Kg/m M/KT 2500	m	Kg					
				14	18	23	30	35	40
10500 kg 3x2000+3x1500 kg	40m	L41+L42+L43 L44+L45	18,2 m	2500	2500	1900	1400	1100	1000
9000 kg 3x2000+2x1500 kg	35m	L41+L42+L43+L45	21 m	2500	2500	2200	1600	1400	
7500 kg 3x2000+1x1500 kg	30m	L41+L42+L45	20,2 m	2500	2500	2100	1600		
4500 kg 3x1500 kg	23m	L41+L44+L45	17,1 m	2500	2300	1800			
4500 kg 3x1500 kg	18m	L41+L45	14,7 m	2500	2000				



# SGT 4010TL

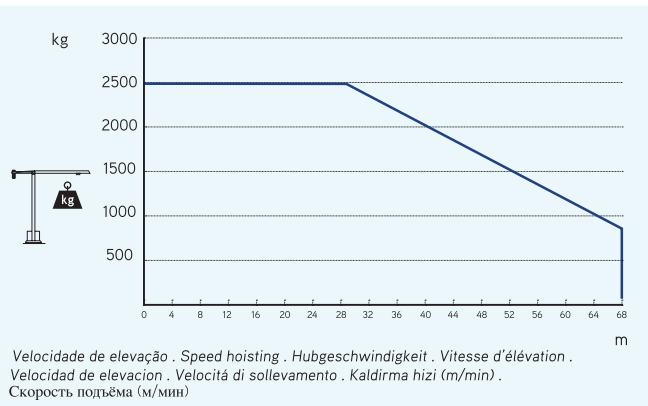
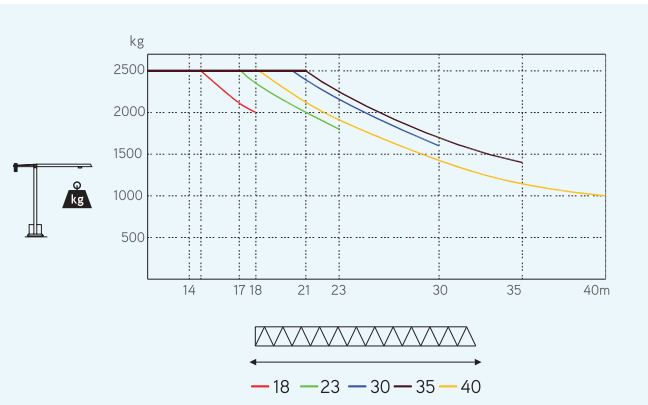
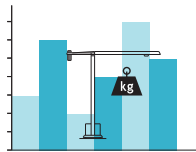
40m - 1.000kg

2.500kg

Características . Characteristics . Eigenschaften  
Características . Characteristics . Eigenschaften  
Özellikler . ХАРАКТЕРИСТИКИ

	0 a 68 m/min	11 kW
	0 a 1 r.p.m.	5 daN.m
	0 a 50 m/min	1,5 kW
	15 m/min	2x3 kW
	20 kVA	
	400 V +- 5% (50/60 Hz)	

\*Opção . Option . Optional . Option . Opzioni . Opzione . Seçenek . Опция



Velocidade de elevação . Speed hoisting . Hubgeschwindigkeit . Vitesse d'élévation .  
Velocidad de elevación . Velocità di sollevamento . Kaldırma hızı (m/min) .  
Скорость подъёма (м/мин)

Elementos . Parts . Teile . Éléments . Elementos . Elemento . Parçalar . ЭЛЕМЕНТЫ

		A (mm)	B (mm)	C (mm)	kg	Code	
L41		11860	1350	1850	2400	509 40 10	
L42		11820	1160	1210	820		
L43		5100	1160	1210	260		
L44		5100	1160	1210	230		
L45		6800	1160	1210	290		
RS3 RI3		2130	1310	1830	2120		
CL2		7260	1220	500	1370		
CP1		1160	320	2530	3x1500 4500		704 15 00
CP2		1160	330	3140	3x2000 6000		704 20 00
TOTAL					17990		
A3		11985	1180	1180	2450	504 12 00	
A3		6075	1180	1180	1300	504 06 00	
A3		3120	1180	1180	720	504 06 01	
A3		3120	1385	1385	810	504 06 03	
A3		1200	1160	1160	350	504 06 02	
A3		4135	500	635	835	606 00 11	
A3	2025		360	635	2x390 780		
TOTAL					1615		
A3		5525	500	635	1075	604 00 01	
A3	2670		360	635	2x535 1070		
TOTAL					2145		